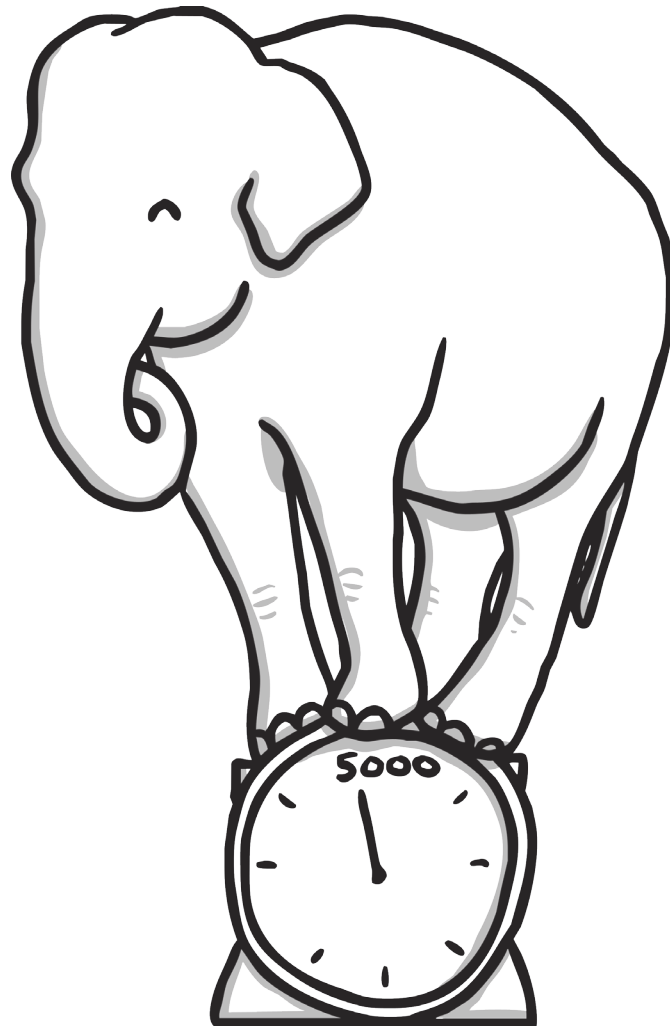


Maths Measures

Home Activity Booklet

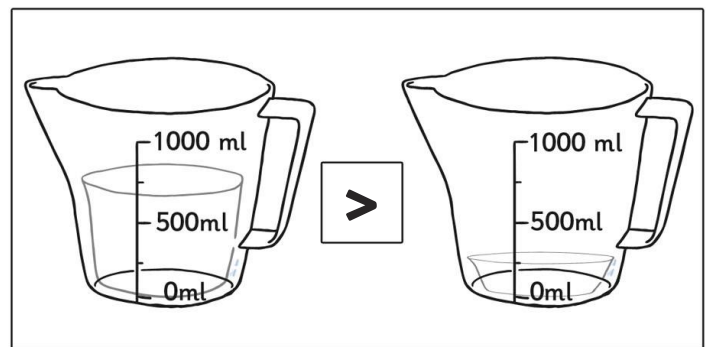
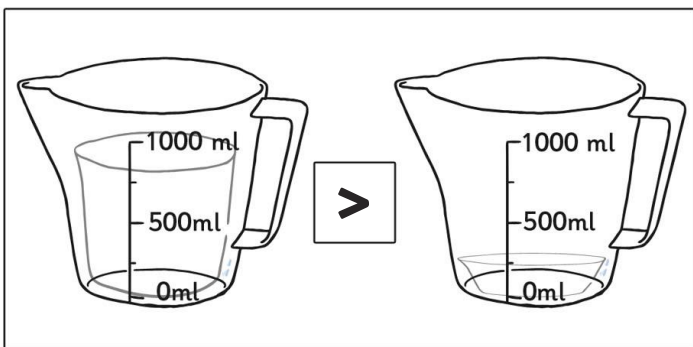
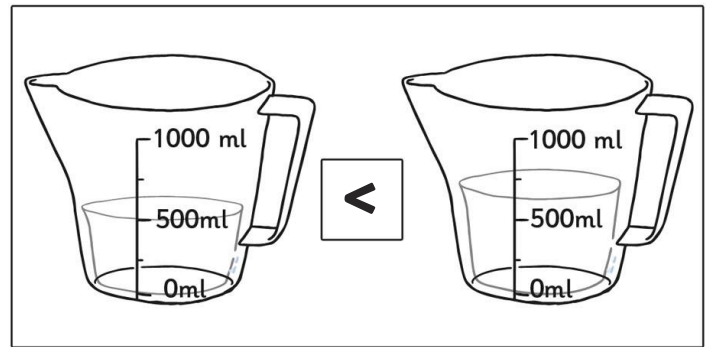
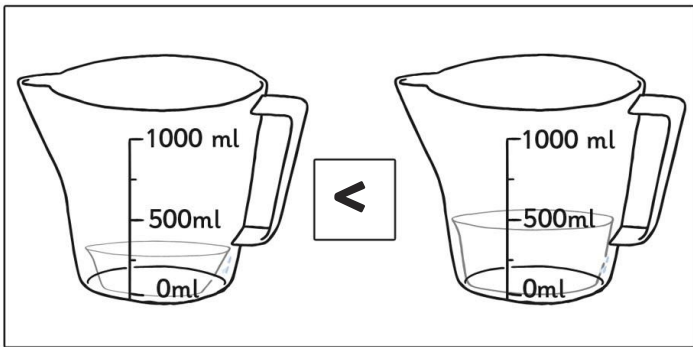
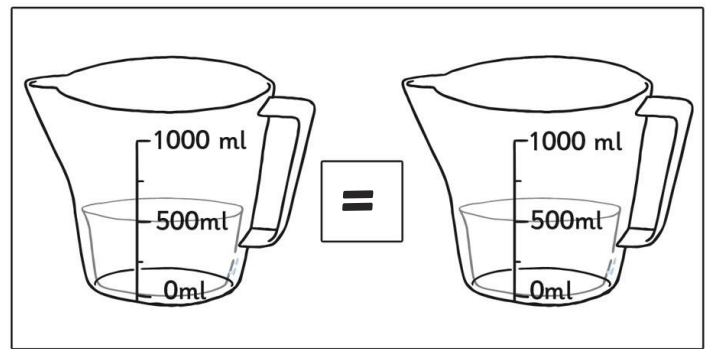
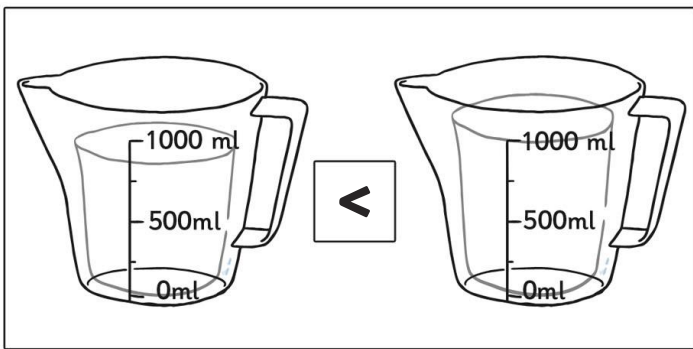
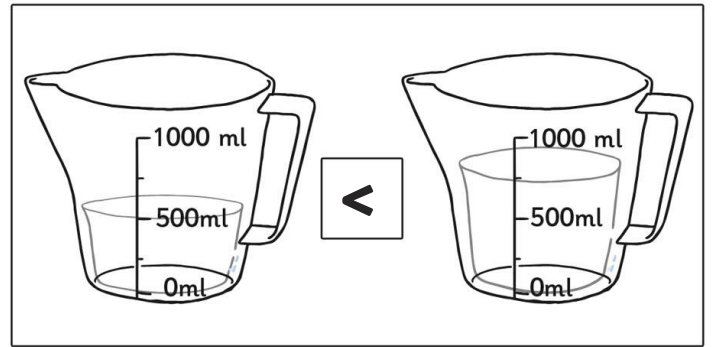
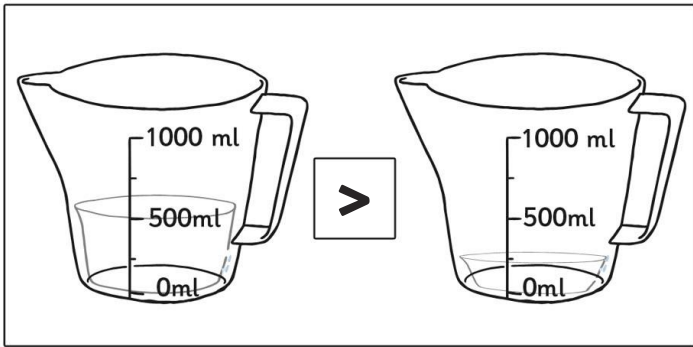
Answers



Compare, Describe and Solve Practical Problems for Mass and Weight **Answers**

question	answer
1	b) the earth
2	c) bicycle
3	less, less, more
4	a) the moon and a feather
5	grey
6	b) 100g of flour and d) 50g of butter
7	Accept and suitable answer, e.g. he could be eating less/ exercising more.
8	They both weigh the same.

Comparing Capacity **Answers**



Compare, Describe and Solve Practical Problems for Time **Answers**

question	answer
Sheet 1	
1	one hour
2	a car
3	children to complete using a timer
4	b) drinking a glass of water
Sheet 2	
5	a) aeroplane
6	a) baby
7	Dave
8	d) year

Mass/Weight – First Measurements and Recording **Answers**

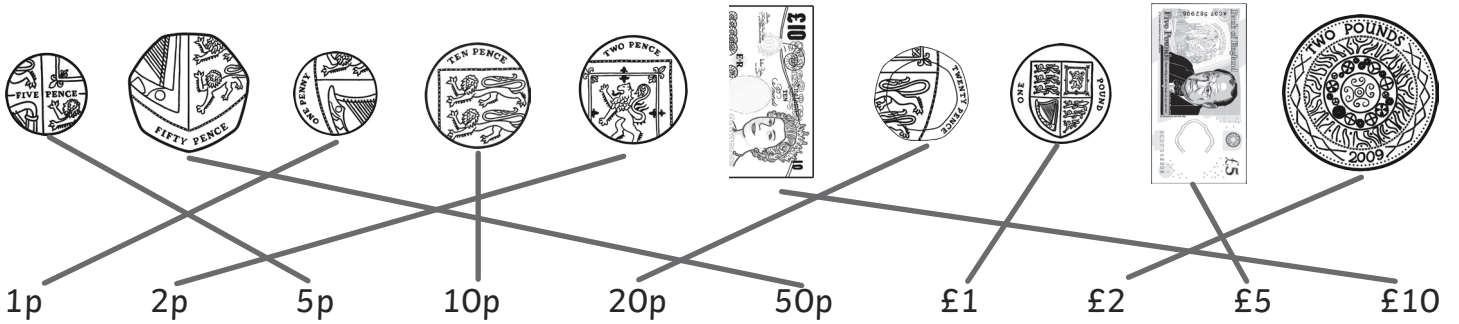
question	answer
A	pounds, grams, stones, ounces, kilogram
	Remaining answers for this sheet are not definitive.

First Measurements in Time **Answers**

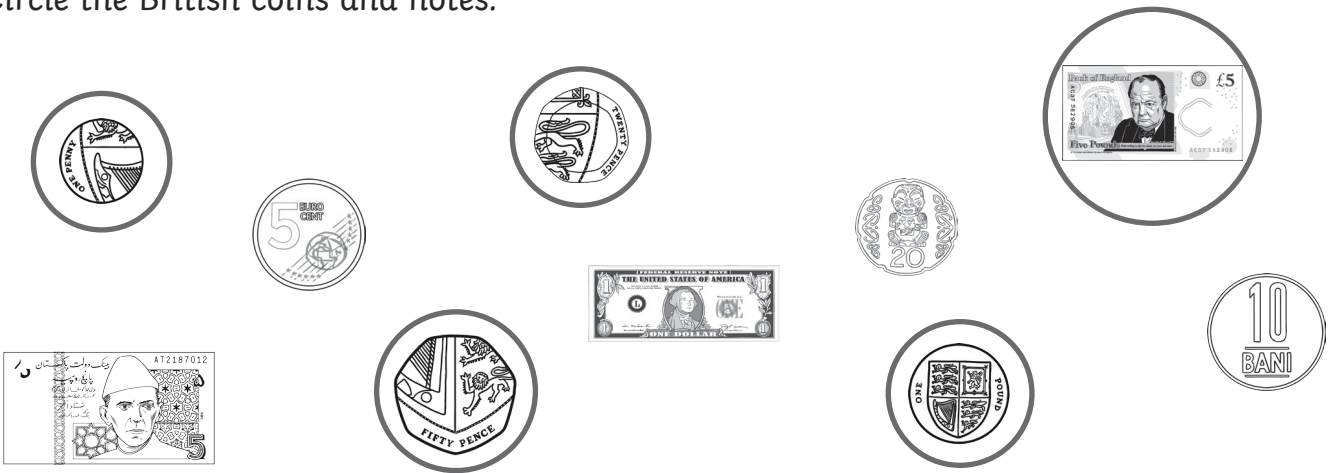
question	answer
A	seconds,days, years, minutes, hours
	Remaining answers for this sheet are not definitive.

Knowing British Coins and Notes **Answers**

A: Match each coin or note to the correct amount.



B: Circle the British coins and notes.



C: Add the two coins together to give you the total.

Coin 1	Coin 2	Total
		2p
		6p
		20p

Coin 1	Coin 2	Total
		15p
		£2
		£3

Times of the day **Answers**

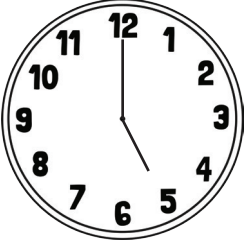
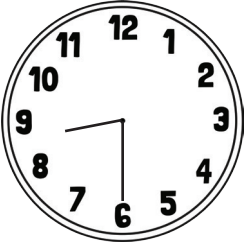
A: Match the activity to the part or parts of the day where it might usually happen.

question	answer
B	1) after
	2) before
	3) before
	4) first, then
	5) then
	6) after

Days of the Week **Answers**

Yesterday	Today	Tomorrow
Tuesday	Wednesday	Thursday
Thursday	Friday	Saturday
Saturday	Sunday	Monday
Friday	Saturday	Sunday
Monday	Tuesday	Wednesday
Wednesday	Thursday	Friday
Sunday	Monday	Tuesday

Time on Clocks **Answers**

question	answer
1	5 o'clock
2	7 o'clock
3	half past 1
4	half past 7
5	half past 12
6	 An analog clock with numbers 1 through 12. The hour hand is between 1 and 2, and the minute hand is pointing at 6. This represents 1:30.
7	 An analog clock with numbers 1 through 12. The hour hand is between 7 and 8, and the minute hand is pointing at 6. This represents 7:30.